



2 Bedrooms | 2 Bathrooms | 1 Reception Rooms

Leaden Hill | Coulsdon | CR5 2FF

Offers over £335,000

LOFT

Leaden Hill |
Coulsdon | CR5 2FF
Offers over £335,000

- Beautifully presented fourth floor modern apartment
- Private balcony with panoramic views
- Allocated parking space
- Two double bedrooms with an en-suite to the primary bedroom
- Elegantly designed, spacious open plan/kitchen and reception room
- High quality integrated appliances and hard flooring
- Two fully tiled bathrooms
- Ideally situated in the heart of Coulsdon Town centre
- Coulsdon town and Coulsdon South train stations within walking distance

Fourth Floor

Hallway

Open Plan

Kitchen/Reception Room

21'1 x 16'9 (6.43m x 5.11m)

Bedroom 1

16'6 x 9'9 (5.03m x 2.97m)

En-Suite

Bedroom 2

12'6 x 9'9 (3.81m x 2.97m)

Bathroom

Outside

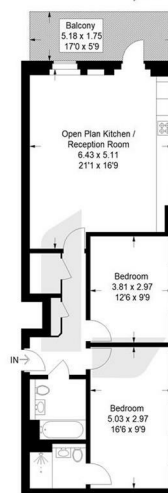
Allocated Parking

Balcony

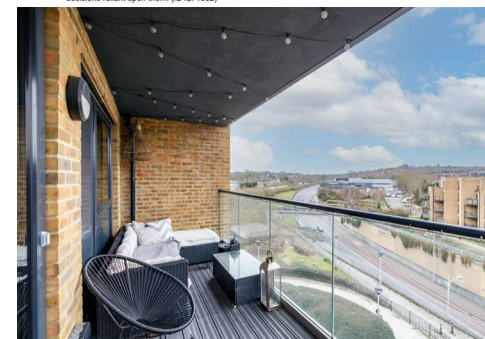
17'0 x 5'9 (5.18m x 1.75m)



Smitham Court, CR5
Approximate Gross Internal Area
76.4 sq m / 812 sq ft



Fourth Floor
This plan is for layout guidance only. Not drawn to scale unless stated. Windows and door openings are approximate. Whilst every care is taken in the preparation of this plan, please check all dimensions, shapes and complex bearings before making any decisions reliant upon them. (ID1271032)



EPC Rating: B

23a High Street
Purley
Surrey
CR8 2AF

0208 660 8070

hello@loft-estates.co.uk